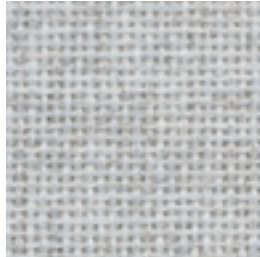


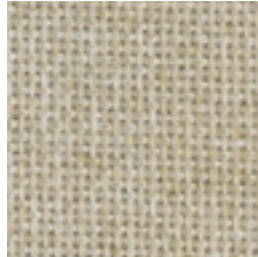




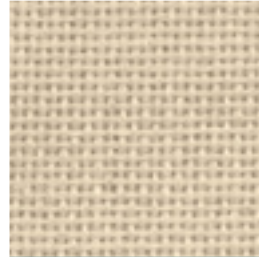
# FABRIC LACKABLE SURFACES



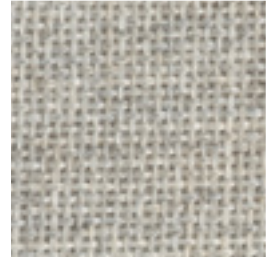
**Silver Papier** 538



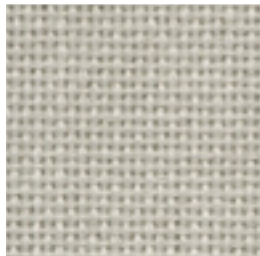
**Wheat** 130



**Bone** 748



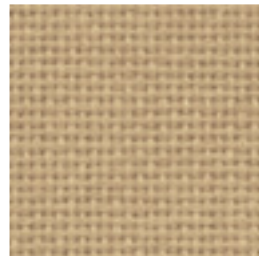
**Opal** 394



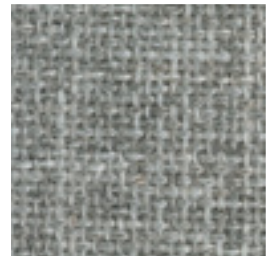
**Pearl** 481



**Apricot Neutral** 404



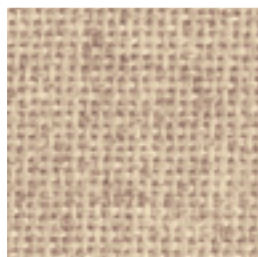
**Straw** 747



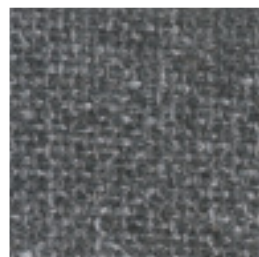
**Grey Mix** 238



**Desert Sand** 758



**Vanilla Neutral** 403



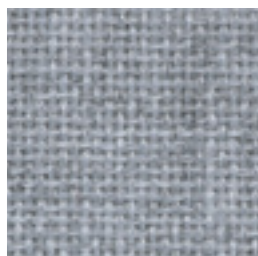
**Medium Grey** 298



**Quartz** 380



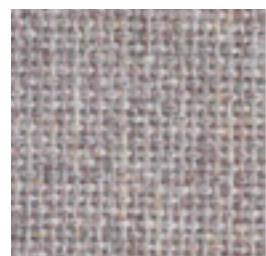
**Silver Neutral** 406



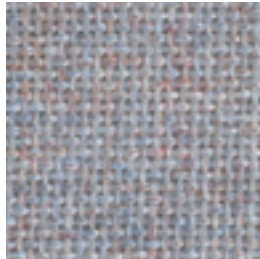
**Bleu Papier** 539



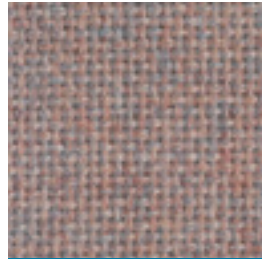
**Cherry Neutral** 400



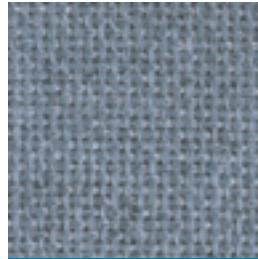
**Lavender Neutral** 405



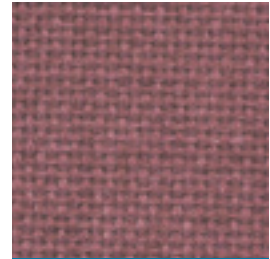
**Blue Neutral** 401



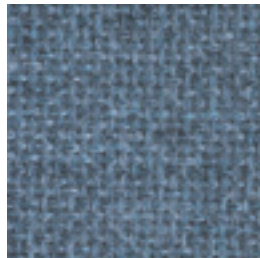
**Rose Quartz** 390



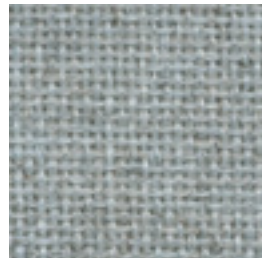
**Crystal Blue** 175



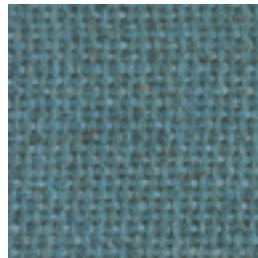
**Sienna** 475



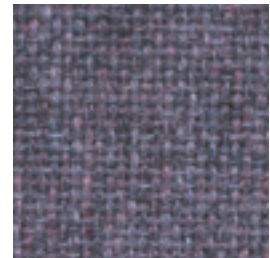
**Wedgewood** 150



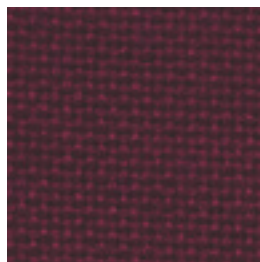
**Verte Papier** 561



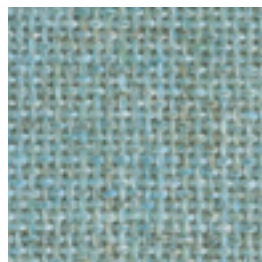
**Aquamarine** 381



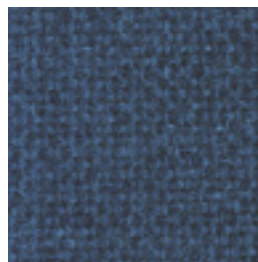
**Amethyst** 424



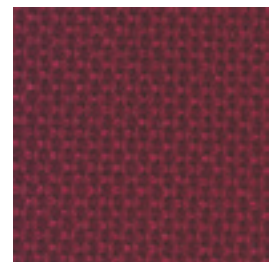
**Deep Burgundy** 556



**Green Neutral** 402



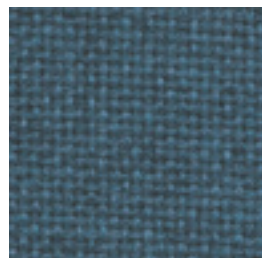
**Baltic** 153



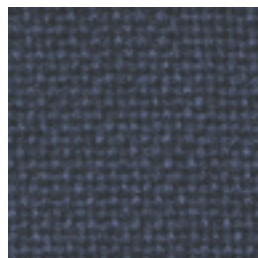
**Claret Accent** 418



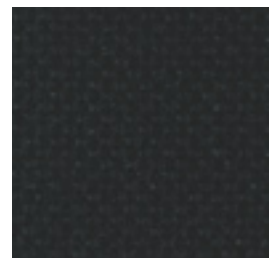
**Blue Spruce** 467



**Ultramarine** 470



**Blue Plum** 553



**Black** 408

## SPECIFICATIONS

Pattern	2100
Contents	100% Recycled Polyester
Weight	16.0 ± 0.5 Oz./Lin. Yd.
Width	66" Usable
Repeat	None
Cleaning Code	W-S*

\*Fabric may be cleaned with mild, water-free solvents or water-based cleaning agents or foam.

## FLAMMABILITY

ASTM E-84	Class 1 or A
NFPA-701	
Large Scale - 1989	Passes
State of CA. Tech.	
Bulletin 117 Sec. E (CS-191-53)	Passes

## PERFORMANCE

Breaking Strength (ASTM D 5034)	150 Lbs. Min. - Warp and Fill
Tear (ASTM D 2261)	30 Lbs. Min. - Warp and Fill
Moisture Regain (ASTM D 2654)	0.5% Max.
Colorfastness to Light (AATCC 16E)	40 Hrs.
Colorfastness to Crocking (AATCC 8)	Class 4 Min. - Dry, Class 4 Min. - Wet

The samples shown on this sheet are representative of the finished fabric to be supplied and may not indicate an exact match. We do not recommend that you specify from this sheet and cannot be responsible for variations in color between this printed sheet and the actual fabric. For a complete listing of our colors, see our website at [www.pvsusa.com](http://www.pvsusa.com). Product samples available upon request.



1020 Railroad Street, Corona, California 92882-1947  
(800)498-2990 ■ (909)817-2200 ■ Fax (909)817-9900  
[www.pvsusa.com](http://www.pvsusa.com) ■ [info@pvsusa.com](mailto:info@pvsusa.com)

© 2003 ABC School Equipment, Inc.