



**PLATINUM™  
VISUAL SYSTEMS**

A Division of *abc* SCHOOL EQUIPMENT, INC.

# VINYL TACKABLE SURFACES

*Colors & Textures*



*Helping People  
Communicate  
With World Class  
Visual Display  
Products*

# HARBORWEAVE TYPE I & II



**Atrium**  
18 oz 2118-00  
21 oz 2121-00



**Sunbury**  
18 oz 2118-26  
21 oz 2121-26



**Winter Mist**  
18 oz 2118-14  
21 oz 2121-14



**Duck**  
18 oz 2118-05  
21 oz 2121-05



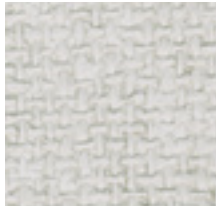
**Light Dionis**  
18 oz 2118-10  
21 oz 2121-10



**Feather Dawn**  
18 oz 2118-04  
21 oz 2121-04



**Rockport**  
18 oz 2118-18  
21 oz 2121-18



**Moonlight**  
18 oz 2118-92  
21 oz 2121-92



**Scarborough**  
18 oz 2118-98  
21 oz 2121-98



**Sea Mist**  
18 oz 2118-97  
21 oz 2121-97

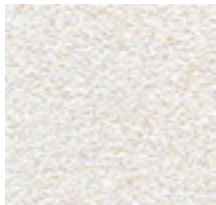
# CERES TYPE II



**Stucco**  
B321-12



**Cream**  
B321-15



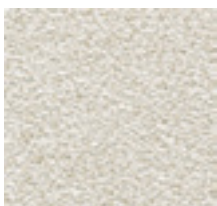
**Oyster**  
B321-10



**Light Quarry**  
B321-19



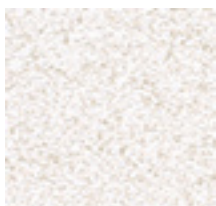
**Tern**  
B321-05



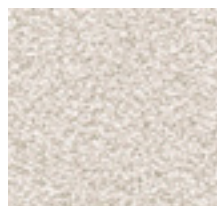
**Dionis**  
B321-93



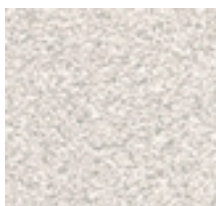
**Fog**  
B321-91



**White Sand**  
B321-16



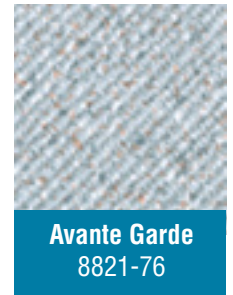
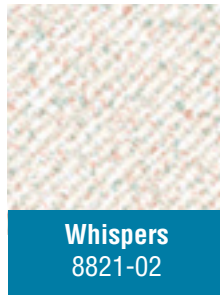
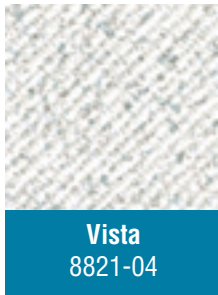
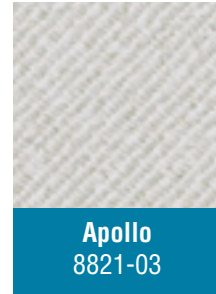
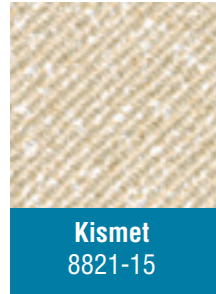
**Cobblestone**  
B321-18



**Mist**  
B321-90

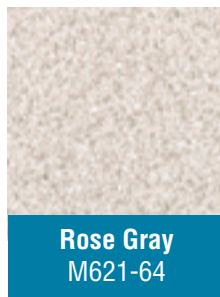
# SPELLBOUND

## TYPE II



# MURATONE

## TYPE II



## HARBORWEAVE 18 oz.

Physical Properties	U.S. Units	Metric Units
Total Weight	18 oz. ply	558 g. plm
	12 oz. psy	407 g. psm
Roll Width	53/54 in.	134/137 cm
Thickness	.0085 in.	0.22 mm
Fabric	Sheeting	
Federal Spec	CCC-W-408A, Type I	
CFFA Spec	CFFA-W-101C, Type II, Class A	
NFPA 101	Meets Class A when tested on	
Life Safety Code	GRC board	

## HARBORWEAVE 21 oz.

Physical Properties	U.S. Units	Metric Units
Total Weight	21 oz. ply	651 g. plm
	14 oz. psy	475 g. psm
Roll Width	53/54 in.	134/137 cm
Thickness	.009 in.	0.23 mm
Fabric	Osnaburg	
Federal Spec	CCC-W-408A, Type II	
CFFA Spec	CFFA-W-101C, Type II, Class A	
NFPA 101	Meets Class A when tested on	
Life Safety Code	GRC board	

## CERES

Physical Properties	U.S. Units	Metric Units
Total Weight	21 oz. ply	651 g. plm
	14 oz. psy	475 g. psm
Roll Width	53/54 in.	134/137 cm
Thickness	.009 in.	0.23 mm
Fabric	Osnaburg	
Federal Spec	CCC-W-408A, Type II	
CFFA Spec	CFFA-W-101A, Type II, Class A	
NFPA 101	Meets Class A when tested on	
Life Safety Code	GRC board	

## SPELLBOUND

Physical Properties	U.S. Units	Metric Units
Total Weight	21 oz. ply	651 g. plm
	14 oz. psy	475 g. psm
Roll Width	53/54 in.	134/137 cm
Thickness	.009 in.	0.23 mm
Fabric	Osnaburg	
Federal Spec	CCC-W-408A, Type II	
CFFA Spec	FFA-W-101C, Type II, Class A	
NFPA 101	Meets Class A when tested on	
Life Safety Code	GRC board	

## MURATONE

Physical Properties	U.S. Units	Metric Units
Total Weight	21 oz. ply	651 g. plm
	14 oz. psy	475 g. psm
Roll Width	53/54 in.	134/137 cm
Thickness	.009 in.	0.23 mm
Fabric	Osnaburg	
Federal Spec	CCC-W-408A, Type II	
CFFA Spec	CFFA-W-101A, Type II, Class A	
NFPA 101	Meets Class A when tested on	
Life Safety Code	GRC board	

## 100% WATER-BASED INKS/CADMIUM FREE

**COLORATIONS:** The colors selected for this product resulted from research within the A & D community on color needs and trends for coordination with the latest in carpeting, laminates, furniture and contract fabrics.



The samples shown on this sheet are representative of the finished vinyl to be supplied and may not indicate an exact match. We do not recommend that you specify from this sheet and cannot be responsible for variations in color between this printed sheet and the actual vinyl. For a complete listing of our colors, see our website at [www.pvsusa.com](http://www.pvsusa.com). Product samples available upon request.



1451 E. Sixth Street, Corona, CA 92879-1715  
 (800)498-2990 ■ (951)817-2200 ■ Fax (951)817-9900  
[www.pvsusa.com](http://www.pvsusa.com) ■ [info@pvsusa.com](mailto:info@pvsusa.com)

© 2003 ABC School Equipment, Inc.